

Belt Width	Cleaned Width	Description	Part No.
------------	---------------	-------------	----------

V-PLOUGH

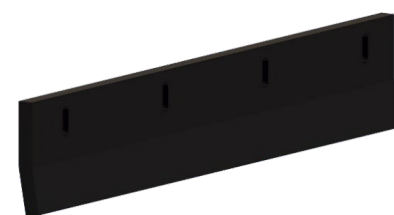
450 - 600mm		VP-P2 450-600	81 401 76 01
750 - 900mm		VP-P2 750-900	81 401 76 02
1050 - 1200mm		VP-P2 1050-1200	81 401 76 03
1400 - 1600mm		VP-P2 1400-1600	81 401 76 04
1800mm		VP-P2 1800	81 401 76 05
2000mm		VP-P2 2000	81 401 76 06
2200mm		VP-P2 2200	81 401 76 07
2400mm		VP-P2 2400	81 401 76 08

The V-Plough is an economical and quick install system. Can be installed on the return belt prior to any major pulley to reduce pulley - belt damage and material build up which can cause belt tracking issues. Self adjusting as blade wears



Belt Width	Description	Part No.
------------	-------------	----------

450 - 600mm	RVPB-P2 450-600	81 420 76 01
750 - 900mm	RVPB-P2 750-900	81 420 76 02
1050 - 1200mm	RVPB-P2 1050-1200	81 420 76 03
1400 - 1600mm	RVPB-P2 1400-1600	81 420 76 04
1800mm	RVPB-P2 1800	81 420 76 05
2000mm	RVPB-P2 2000	81 420 76 06
2200mm	RVPB-P2 2200	81 420 76 07
2400mm	RVPB-P2 2400	81 420 76 08



SPECIFICATION:

- * Available in belt sizes 450mm to 2400mm
- * Material Spec Polyurethane 93A (PU)
- * Product suits conveyor belts with mechanical belt fasteners

Belt Width	Description	Part No.	kg
------------	-------------	----------	----

DIAGONAL PLOUGHS

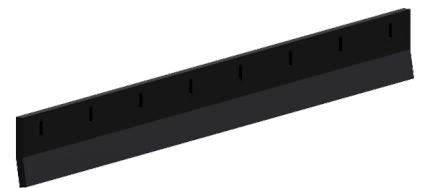
450 - 750mm	DP-P2 450-750	81 431 76 01	
900 - 1050mm	DP-P2 900-1050	81 431 76 02	
1200 - 1500mm	DP-P2 1200-1500	81 431 76 03	
1600 - 1800mm	DP-P2 1600-1800	81 431 76 04	
2000 - 2400mm	DP-P2 2000-2400	81 431 76 05	

Install on the return belt prior to any major pulley to reduce pulley damage and material build up which can cause belt tracking issues.
Installation set up is at 45° across the belt, can be installed left or right handed



REPLACEMENT BLADE

450 - 750mm	RDPB-P2 450-750	81 430 76 10	
900 - 1050mm	RDPB-P2 900-1050	81 430 76 12	
1200 - 1500mm	RDPB-P2 1200-1500	81 430 76 13	
1600 - 1800mm	RDPB-P2 1600-1800	81 430 76 14	
2000 - 2400mm	RDPB-P2 2000-2400	81 430 76 15	



SPECIFICATION:

- * Available in belt sizes 450mm to 2400mm
- * Material Spec Polyurethane 93A (PU)
- * Product suits conveyor belts with mechanical belt fasteners